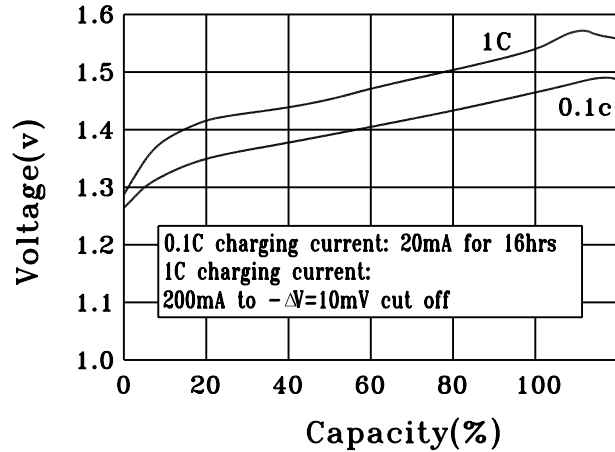


Ni-Cd rechargeable cylindrical cell (Data Sheet)

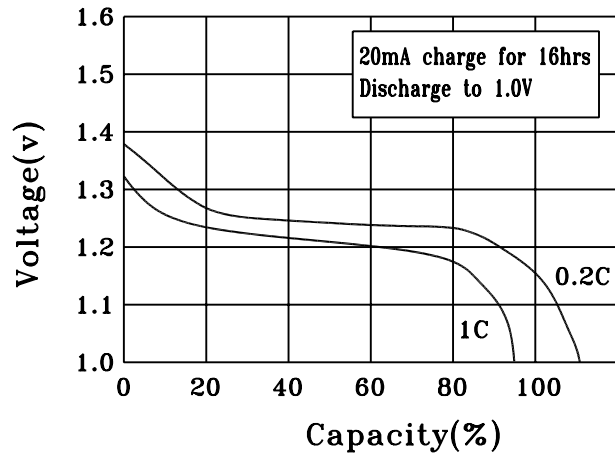
Specification

Nominal Voltage		1.2V	
Dimensions	Diameter	10.0±0.2mm	
	Height	28.5±0.3mm	
	Apx. Weight	6g	
0.2C Discharge Capacity	Typical	220mAh	
	Minimum	200mAh	
Typical Internal Impedance		Less than 60mΩ	
Charge	Standard	20mA for 16hrs	
	Fast	200mA for about 75min	
Life expectancy		500 cycles	
Operating Temperature	Charge	Standard	0°c to 40°c
		Fast	10°c to 40°c
	Discharge		-10°c to 50°c
	Storage	< 1 year	-10°c to 30°c
< 3 months		-10°c to 40°c	

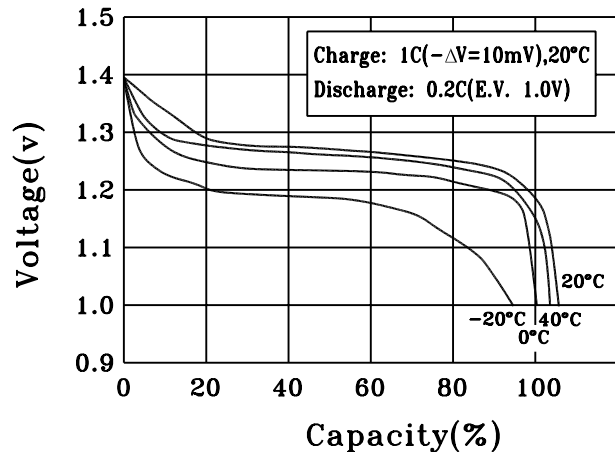
CHARGE CHARACTERISTICS



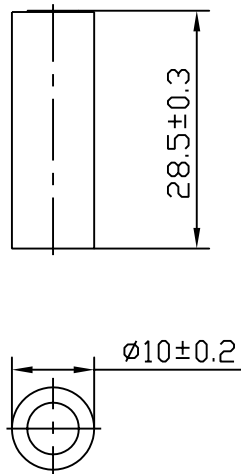
DISCHARGE CHARACTERISTICS



DISCHARGE CHARACTERISTICS AT DIFFERENT TEMPERATURE



(CELL DIMENSIONS)



(With tube)

1:1