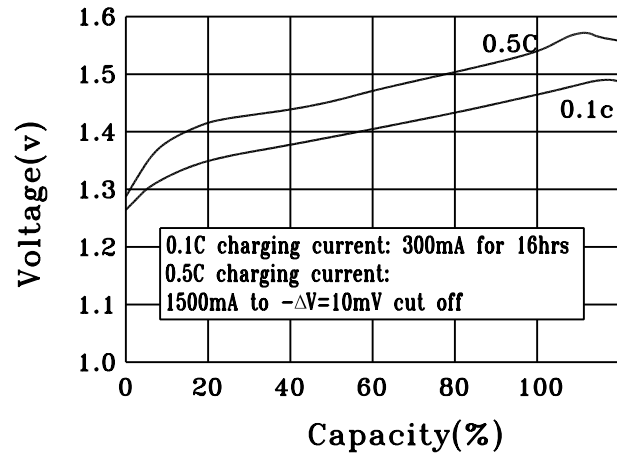


Ni-Cd rechargeable cylindrical cell (Data Sheet)

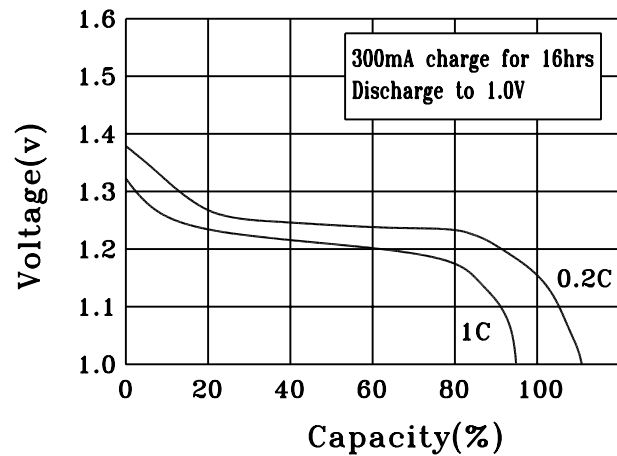
Specification

Nominal Voltage		1.2V	
Dimensions	Diameter	25.2±0.2mm	
	Height	49.5±0.3mm	
	Apx. Weight	75g	
0.2C Discharge Capacity	Typical	3050mAh	
	Minimum	3000mAh	
Typical Internal Impedance		Less than 20mΩ	
Charge	Standard	300mA for 16hrs	
	Fast	1500mA for about 150min	
Life expectancy		500 cycles	
Operating Temperature	Charge	Standard	0°c to 40°c
		Fast	10°c to 40°c
	Discharge		-10°c to 50°c
	Storage	< 1 year	-10°c to 30°c
< 3 months		-10°c to 40°c	

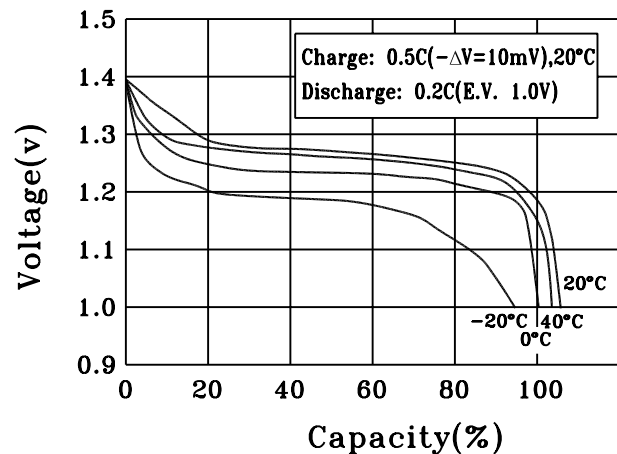
CHARGE CHARACTERISTICS



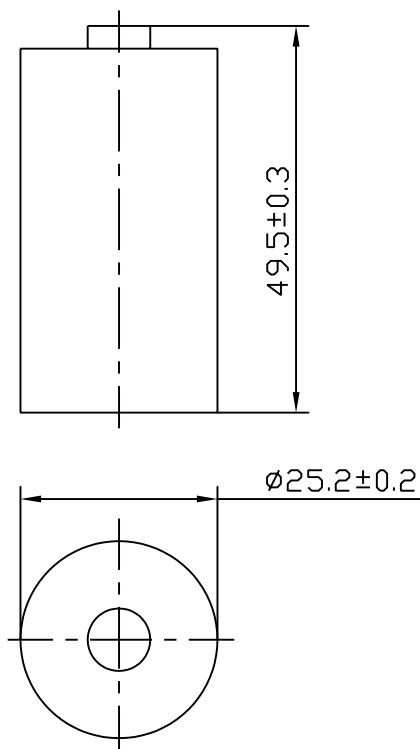
DISCHARGE CHARACTERISTICS



DISCHARGE CHARACTERISTICS AT DIFFERENT TEMPERATURE



(CELL DIMENSIONS)



(With tube)

1:1