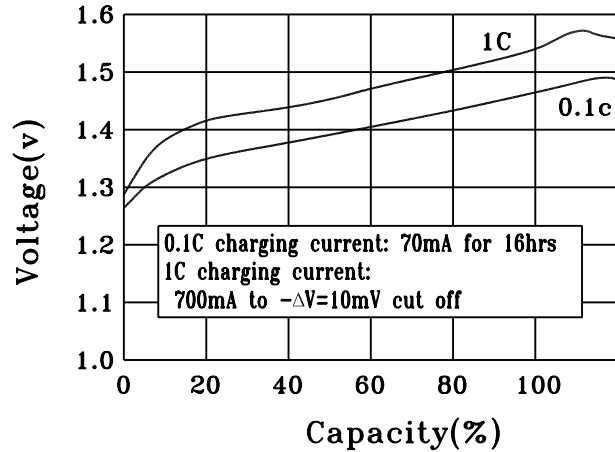


Ni-Cd rechargeable cylindrical cell (Data Sheet)

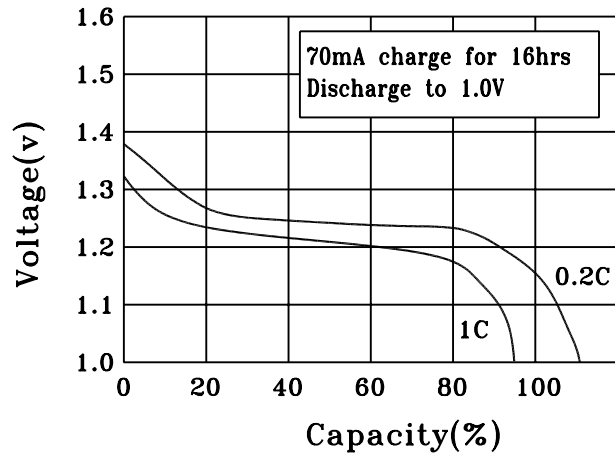
Specification

| | | | |
|----------------------------|---------------|-----------------------|--------------|
| Nominal Voltage | | 1.2V | |
| Dimensions | Diameter | 21.9±0.2mm | |
| | Height | 26.0±0.3mm | |
| | Apx. Weight | 25g | |
| 0.2C Discharge Capacity | Typical | 750mAh | |
| | Minimum | 700mAh | |
| Typical Internal Impedance | | Less than 30mΩ | |
| Charge | Standard | 70mA for 16 hrs | |
| | Fast | 700mA for about 75min | |
| Life expectancy | | 500 cycles | |
| Operating Temperature | Charge | Standard | 0°c to 40°c |
| | | Fast | 10°c to 40°c |
| | Discharge | -10°c to 50°c | |
| | | Storage | < 1 year |
| < 3 months | -10°c to 40°c | | |

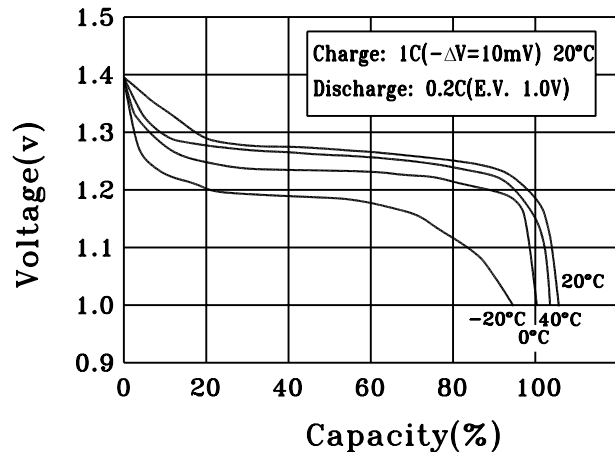
CHARGE CHARACTERISTICS



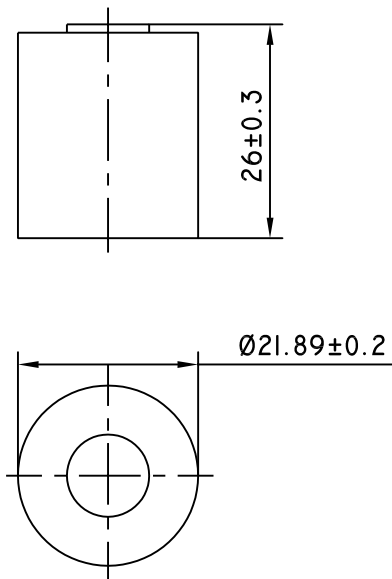
DISCHARGE CHARACTERISTICS



DISCHARGE CHARACTERISTICS AT DIFFERENT TEMPERATURE



(CELL DIMENSIONS)



(With tube)

1:1