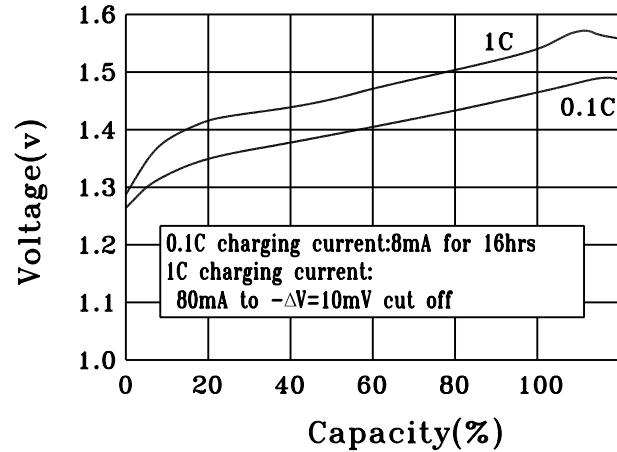


Ni-MH rechargeable cylindrical cell (Data Sheet)

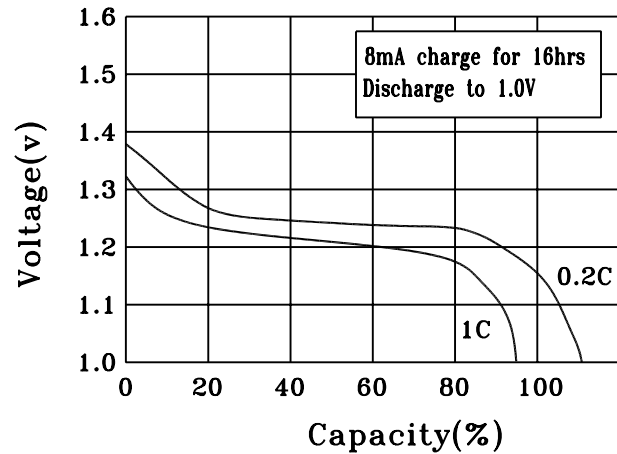
Specification

Nominal Voltage		1.2V	
Dimensions	Diameter	10.0±0.2mm	
	Height	10.5±0.3mm	
	Apx. Weight	5g	
0.2C Discharge Capacity	Typical	90mAh	
	Minimum	80mAh	
Typical Internal Impedance		Less than 150mΩ	
Charge	Standard	8mA for 16 hrs	
	Fast	80mA for about 75min	
Life expectancy		500 cycles	
Operating Temperature	Charge	Standard	0°C to 40°C
		Fast	10°C to 40°C
	Discharge		-10°C to 50°C
	Storage	< 1 year	-10°C to 30°C
< 3 months		-10°C to 40°C	

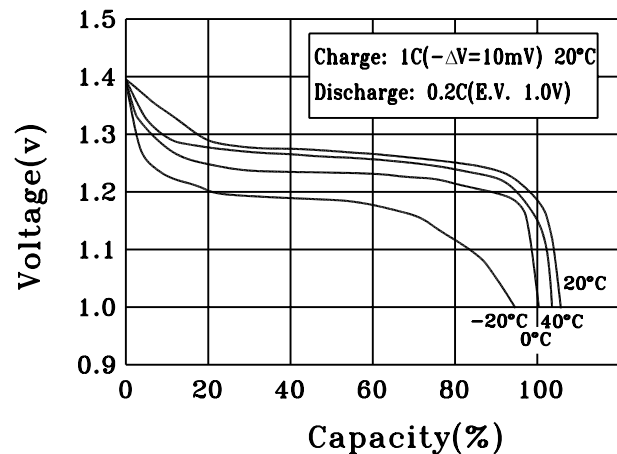
CHARGE CHARACTERISTICS



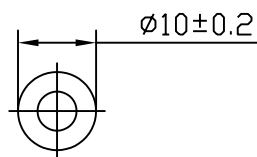
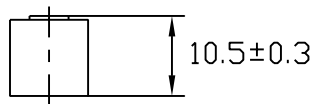
DISCHARGE CHARACTERISTICS



DISCHARGE CHARACTERISTICS AT DIFFERENT TEMPERATURE



(CELL DIMENSIONS)



(With tube)

1:1